



# EphA10 Monoclonal Antibody

<b>Catalog No</b>	YP-Ab-12905
<b>Isotype</b>	IgG
<b>Reactivity</b>	Human
<b>Applications</b>	WB;ELISA
<b>Gene Name</b>	EPHA10
<b>Protein Name</b>	Ephrin type-A receptor 10
<b>Immunogen</b>	Purified recombinant fragment of human EphA10 expressed in E. Coli.
<b>Specificity</b>	EphA10 Monoclonal Antibody detects endogenous levels of EphA10 protein.
<b>Formulation</b>	Ascitic fluid containing 0.03% sodium azide, 0.5% BSA, 50% glycerol.
<b>Source</b>	Monoclonal, Mouse
<b>Purification</b>	Affinity purification
<b>Dilution</b>	Western Blot: 1/500 - 1/2000. ELISA: 1/10000. Not yet tested in other applications.
<b>Concentration</b>	1 mg/ml
<b>Purity</b>	≥90%
<b>Storage Stability</b>	-20°C/1 year
<b>Synonyms</b>	EPHA10; Ephrin type-A receptor 10
<b>Observed Band</b>	
<b>Cell Pathway</b>	[Isoform 1]: Cell membrane ; Single-pass type I membrane protein .; [Isoform 3]: Cell membrane ; Single-pass type I membrane protein .; [Isoform 2]: Secreted .
<b>Tissue Specificity</b>	Mainly expressed in testis.
<b>Function</b>	catalytic activity:ATP + a [protein]-L-tyrosine = ADP + a [protein]-L-tyrosine phosphate.,domain:The protein kinase domain is predicted to be catalytically inactive.,function:Receptor for members of the ephrin-A family. Binds to EFNA3, EFNA4 and EFNA5.,similarity:Belongs to the protein kinase superfamily. Tyr protein kinase family. Ephrin receptor subfamily.,similarity:Contains 1 protein kinase domain.,similarity:Contains 1 SAM (sterile alpha motif) domain.,similarity:Contains 2 fibronectin type-III domains.,tissue specificity:Mainly expressed in testis.,
<b>Background</b>	Ephrin receptors, the largest subfamily of receptor tyrosine kinases (RTKs), and their ephrin ligands are important mediators of cell-cell communication regulating cell attachment, shape, and mobility in neuronal and epithelial cells (Aasheim et al., 2005 [PubMed 15777695]). See MIM 179610 for additional background on Eph receptors and ephrins.[supplied by OMIM, Mar 2008],



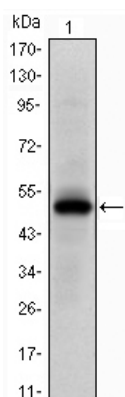
## matters needing attention

Avoid repeated freezing and thawing!

## Usage suggestions

This product can be used in immunological reaction related experiments. For more information, please consult technical personnel.

## Products Images



Western Blot analysis using EphA10 Monoclonal Antibody against human EphA10 (AA: 34-295) recombinant protein.

